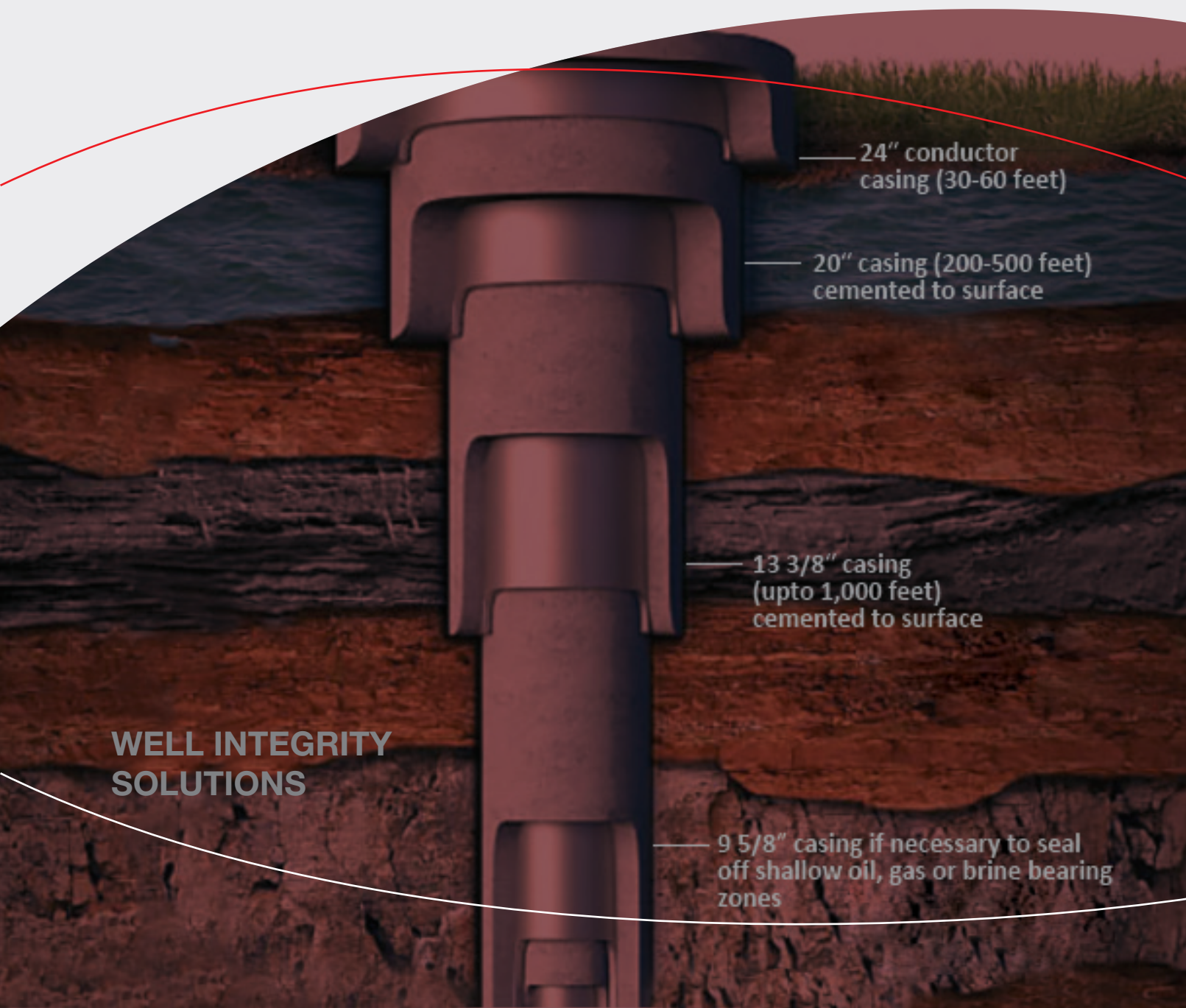


# GINNOVO

## IRS-G

### INTEGRITY & RESERVOIR SCANNER



24" conductor casing (30-60 feet)

20" casing (200-500 feet) cemented to surface

13 3/8" casing (upto 1,000 feet) cemented to surface

9 5/8" casing if necessary to seal off shallow oil, gas or brine bearing zones

WELL INTEGRITY  
SOLUTIONS

**Ginnovo's IRS-G** tool is designed to provide a detailed reservoir and well integrity evaluation without the need to pull out the tubing. The IRS-G consists of two modules that makes this tool unique and very efficient in terms of information acquired from a single run. The combination of neutron logging module and electromagnetic defectoscope makes the IRS-G stand out from the range of other conventional tools in terms of applicability and efficiency.

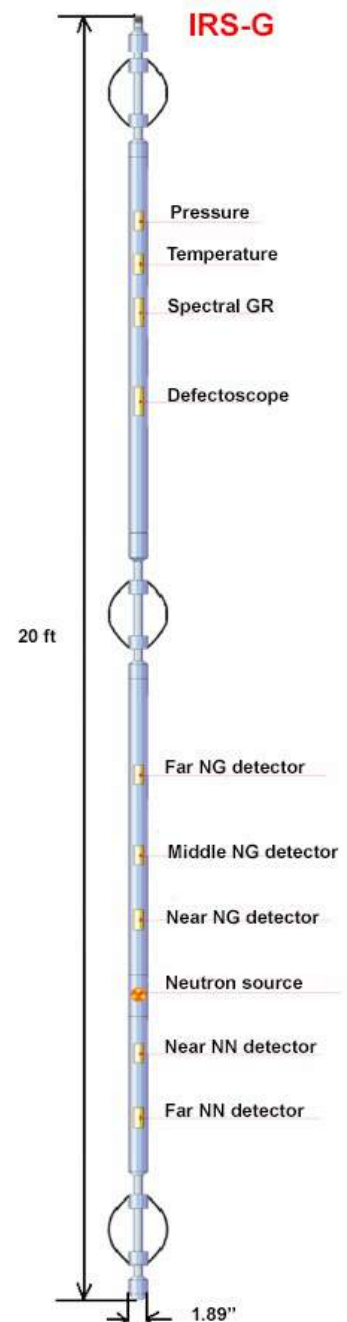
The tool is capable of cement evaluation by means of neutron logging that gives it a competitive edge and vast possibilities. Precise multi-barrier electromagnetic defectoscope, capable of quantitatively measuring the casing wall thickness behind four barriers, is a valuable addition to the toolstring which provides detailed corrosion log of multiple casings.

### Features:

- The tool provides detailed formation evaluation by determining reservoir saturation, neutron porosity, permeability and matrix density
- Lithological modelling (including clay model)
- Through tubing cement evaluation behind two casing
- Annular crossflow detection
- Oil-water/gas-oil/gas-water contact determination
- Detection of annual gas and water accumulations
- Multi-casing wall thickness determination

### Advantages:

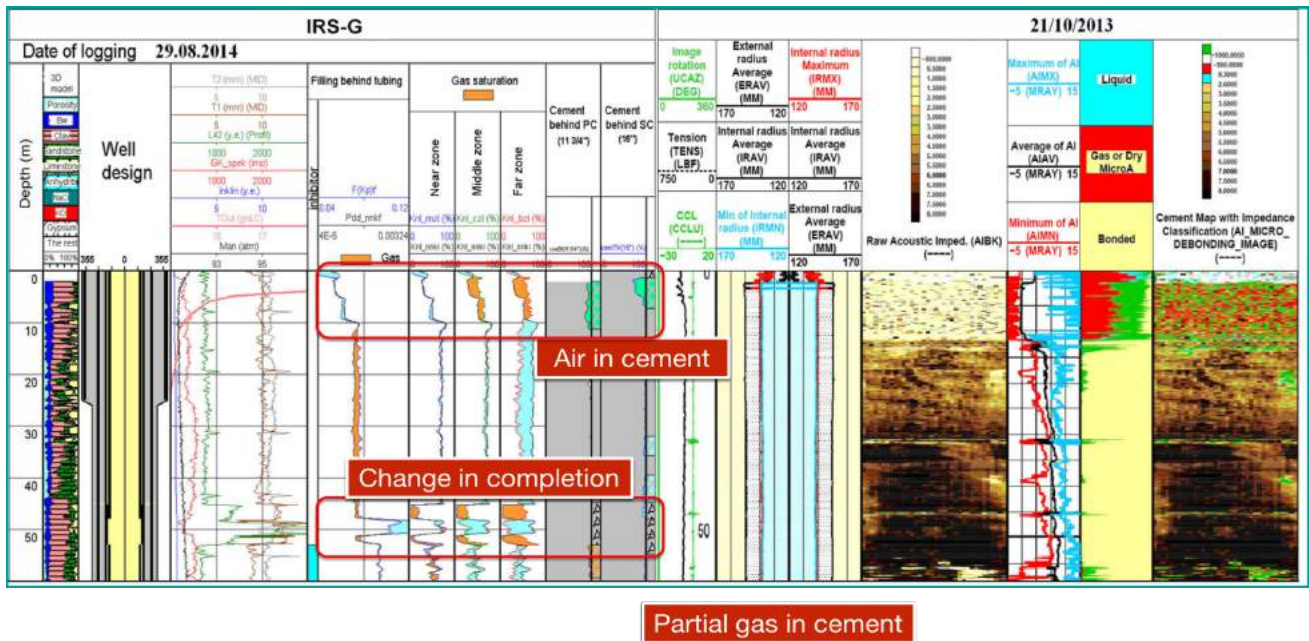
- No need to shut the well in and pull out the tubing
- All measurement are taken in a single run
- 360 radial measurements
- No geological restrictions
- Compatible with any logging system



## Technical Specifications:

Tool OD, in	1.89; 3.54
Tool length, ft	20
Max. pressure, psi	14500
Max. temperature, F	300
Spectrometer energy resolution on peak 137Cs, %	<15
Energy range of neutron capture gamma rays, MeV	0.1-8.0
Energy range of spectral gamma ray, MeV	0.1-3.0
Telemetry	Manchester-2
Power supply, V	180-260, 50Hz
Logging Speed, ft/min	10
Temperature sensor resolution, C	0.01
Multi barrier defectoscope resolution range, in	0.015-0.025
Weight, lbs	140; 220

## Examples of logs



# GINNOVO

**Ginnovo International**  
Level 4<sup>th</sup>, Gold Tower (HQ)  
Jumeirah Lake Towers (JLT), Cluster (I)  
Office# 4F, P.O. Box 87305  
Dubai, United Arab Emirates

Tel. +971 (4) 368 2133  
E-mail. [info@ginnovo-group.com](mailto:info@ginnovo-group.com)  
Web. [www.ginnovo-group.com](http://www.ginnovo-group.com)